



Calypso Orchid near Divide Curt Nimz

May 2022

Dear Colleague,

May in Colorado is most often unsettled! It can bring snow, rain, gusting wind events, wildflowers, daffodils and most unfortunately wildfires. Please stay safe.

Here's a lineup of May events and news:

- Colorado Public Lands Day hike in the Beaver Creek Wilderness Study Area - Saturday May 21
- Climate Resilience presentation at Partners in the Outdoors conference
- The Wild Things video Protecting Grape Creek
- Wildlife Linkages in the Sky
- Make a donation to Wild Connections
- Looking ahead to summer events

Read on, and then get outdoors for your next adventure...

**Colorado Public Lands Day
Beaver Creek Wilderness Study Area Hike
Saturday, May 21
9:00 AM to 4:30 PM**



Beaver Creek seen from high on the trail
Photo Jim Lockhart.

Beaver Creek's Powerline Trail, in the Beaver Creek Wilderness Study Area, offers one of the premier lower elevation hikes in the Pikes Peak region.

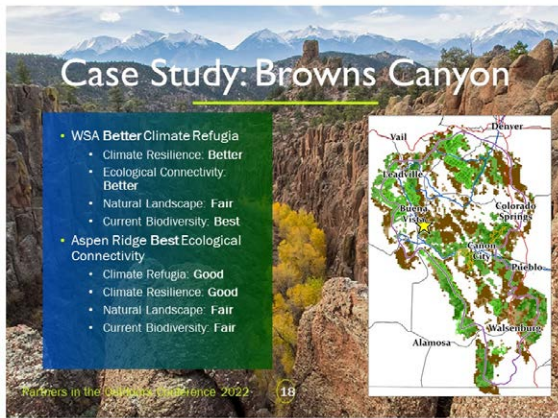
With scenic canyon and ridge top views, the trail climbs 1,900 feet in 8 miles.

Learn about the area's natural and human history and why it is a prime candidate for wilderness designation under the [Colorado Wilderness Act](#), currently before Congress.

Registration required. For more information or to register for the hike, contact Jim Lockhart at [719-385-0045](tel:719-385-0045) or jlock@datawest.net no later than Friday afternoon, May 20th.

Go here for more details
and to register

Climate Resilience at the Partners in the Outdoors Conference April 2022 Vail, Colorado



Case study slide from Alison Gallensky's presentation. Image Alison Gallensky



Chief Randy Moore gave the keynote address. Photo Alison Gallensky

Wild Connections, [Rocky Mountain Wild](#), and [Conservation Lands Foundation](#), co-hosted a seminar *Protecting Climate Resilient Lands*, sharing our *Central Colorado Climate Resiliency Project* and the nationwide [Climate Atlas](#) at the Colorado Parks and Wildlife Partners in the Outdoors Conference.

The climate modeling portion of the *Central Colorado Climate Resiliency Project* is almost complete. This summer we will be reviewing and enhancing the modeling approach by comparing our results to other models of Climate Resilience and Biodiversity. A student from [Colorado State University's Masters of Conservation Leadership](#) will help us with this work. Join us to learn more about climate resilient lands in Wild Connection's region through our upcoming hikes and other events.

Almost 600 people came to the conference in Vail to share in breakout seminars and hear from keynote speaker Randy Moore, Chief of US Forest Service

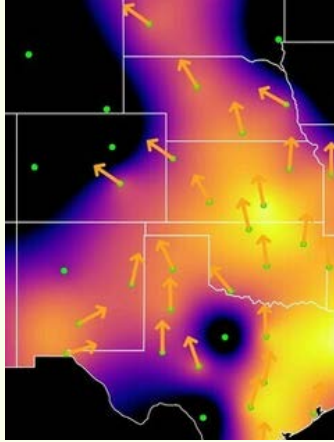
The Wild Things video project by Pikes Peak State College group



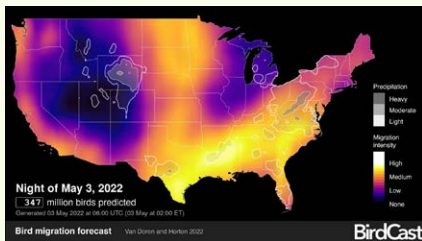
The Wild Things, a student group at Pikes Peak State College, went on a field trip with John Sztukowski and Jim Lockhart to Grape Creek. They created this video on *Protecting Grape Creek* which earned them an "A" for their class project. Many thanks for their work!

The proposed gold mining at Grape Creek is on hold for now because Zephyr Minerals is unable to meet the permitting requirements this year.

Wildlife Linkages in the Sky



Radar from May 1, 2022. SE Colorado was on the edge of the major movements from the Gulf coast and through OK and KS. Source Birdcast.info



Forecast for the night of May 3-4 will be heavy up the Mississippi flyway and into the mid-Atlantic states. Colorado's central mountains do not have the right conditions for night migrators. Source Birdcast.info

Wildlife linkages are not just on the land. They are in the air as well. Every year in between 3.5 and 4.0 billion birds migrate thousands of miles across North America. More than 80% of them travel at night, navigating through the night sky.

May and June are the peak months for birds migrating at night across Colorado.

Artificial lights can attract and disorient birds. They may circle endlessly around bright city buildings or get off their normal migration route.

Learn more about migrations and how to watch spring birds and protect the night flyers. [Audubon Society](#), [Birdcast](#) and [Lights Out Colorado](#) have bird watching events, solid information, and you'll really like Birdcast's radar forecast and time lapse maps.



Make A Difference For Wildlands With Your Donation

[Go here to donate](#)

People like you are Wild Connections' most important source of financial support. Your gifts cover expenses for climate resiliency work, wilderness advocacy, restoration projects, agency land management oversight and backcountry hikes.

Make a one-time or recurring donation here. Your gift will make a difference!

Looking ahead...

>> **Landscapes** June newsletter will feature *Climate Refugia and Outstanding Waters*. It will land in your in box the last week of May. Go [here](#) to subscribe or use the link in this email footer to update your subscription.

>> It's not too soon to think about your summer in the outdoors. Watch for details on our [Events page](#) and in future Wild News



Rock Creek in Lost Creek Wilderness is a multi-year restoration project of the US Forest Service, Trout Unlimited and Wild Connections volunteers.

The June hiking and optional camping will give you a chance to check it out

Photo: Claude Neumann

- June 3-4 - Rock Creek/Lost Creek Wilderness hike and camp
- August (Date TBD) - Green Mountain Thistle removal and monitoring
- August (Date TBD) - North Tarryall and Sheep Creek restoration projects monitoring.
- August/September - Pawnee Montane Skipper butterfly census with the Forest Service and US Fish and Wildlife Service.

*From Jim, John, Alison, Claude, Kristin, Jean and John
Wild Connections Board and staff*

Our Contact Information

{{Organization Name}}

{{Organization Address}}

{{Organization Phone}}

{{Organization Website}}

{{Unsubscribe}}



DONATE

We recognize our area as the ancestral lands of the Ute, Cheyenne, Jicarilla Apache, Arapaho and other indigenous peoples.