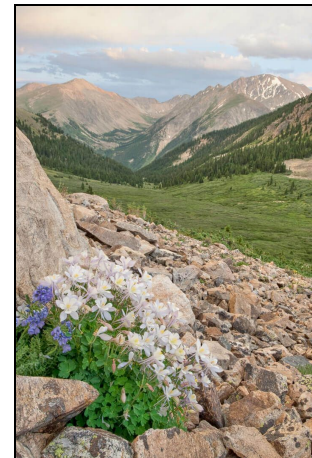


# Pike-San Isabel National Forest Travel Planning

## About the Forest:

- The **2.3 million-acre** Pike San Isabel National Forest (PSI) forms the majestic backdrop to southwest Denver, Colorado Springs and Pueblo and borders many mountain communities like Salida, Buena Vista, and Fairplay.
- The PSI contains 9 wilderness areas, Brown's Canyon National Monument, 23 14,000-foot peaks, and 750,000 acres of roadless forest.
- The PSI has over **2,000 miles of roads**, many of which are largely leftover from a bygone era of timber and mining.
- Across the PSI, there are more than **500 miles of motorized trails** for dirtbikes, ATVs, and other off-highway vehicles.

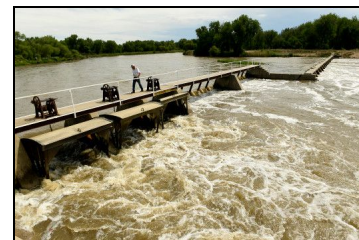


## What is Travel Planning?

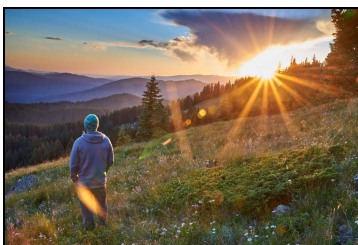
- Determines which roads and trails are open or closed to different classes of motorized vehicles (e.g. motorcycles, ATVs, full-sized vehicles, etc)
- Sets the maintenance level for roads (e.g. 4x4 vs passenger vehicle)
- Applies seasonal or administrative closures to certain routes

## Drinking Water

- Over **60% of metropolitan Denver** relies on water from the South Platte River that originates in the PSI and feeds Denver, Aurora, and Centennial.
- Runoff from unmaintained roads turns clean, clear flowing streams into a muddy, murky mess.
- This **sediment pollution from roads** can stress drinking water utilities by increasing filtration costs. Sediment from roads also settles in reservoirs, and this accumulation over time results in a loss in reservoir capacity, which is expensive to restore.



## Quiet Recreation



- The PSI is the **third most visited national forest in the country**
- According to the USFS, only 6.5% of recreation visitors to the PSI ride OHVs as their primary activity. The rest participate in hiking, bicycling, nature viewing, photography and other quiet use forms of recreation.
  - The noise from these machines can disrupt the quietude and natural experience sought by those who like to hike, hunt, camp, and otherwise participate in non-motorized activities, which are most of the PSI's visitors.

---

## How to Comment on the PSI Travel Plan

Draft EIS Comments Due November 4

Project Page: <https://www.fs.usda.gov/project/?project=48214>

Click the "Comment/Object on Project" link in the right sidebar

*Your input can help shape the future for recreation, wildlife and natural resource health on the forest - comment today!*

# Pike-San Isabel National Forest Travel Planning

## Fiscal Responsibility

- It costs about \$1.6 million annually to manage the PSI's roads, yet, the forest receives only \$420,000 each year. The **\$1.2 million gap in funding** annually means 75% of roads go unmaintained each year.
- As of 2009, the forest needed \$16.4 million to address the entire **backlog of uncompleted road maintenance**.
- It is important to focus limited dollars on important roads, like primary recreational access roads. This means disinvesting in and decommissioning roads that are unused and unneeded.



## Fish & Wildlife

- The PSI is home to **lynx, owls, eagles, bighorn sheep, mountain goat, elk, deer, antelope, black bear, mountain lion, bobcat, trout** and many other species.
- Motorized trails and roads **fragment wildlife habitat** and migration corridors
- Rain and snow runoff carries **sediment from dirt roads** into nearby streams and aquatic habitats.
- Seasonal restrictions and road/trail closures in critical habitat help maintain healthy wildlife populations.



## Travel Plan Alternatives from the Draft Environmental Impact Statement

Alternative A: Public Motorized Routes Prior to Settlement (No Action Alternative). 2,944 miles motorized routes total (2,004.85 miles of roads/505.96 miles motorized trails).

Alternative B: Settlement Action Proposal. 1,663 miles motorized routes total (1,161 miles of roads/502 miles motorized trails).

Alternative C: Proposed Action. 2,408 miles motorized routes total (1,792 miles of roads/616 miles motorized trails).

Alternative D: Motorized-Recreation-Focused Proposal. 2,426 miles motorized routes total (1,441 miles of roads/984 miles motorized trails).

Alternative E: Non-Motorized-Recreation-Focused Proposal. 1,248 miles motorized routes total (969 miles of roads/278 miles motorized trails).

**The Forest will ultimately choose a combination of different alternatives**, rather than just selecting all recommendations from one alternative so it's important to highlight the good and not-so-good options in each alternative.

---

## How to Comment on the PSI Travel Plan

*Draft EIS Comments Due November 4*

Project Page: <https://www.fs.usda.gov/project/?project=48214>

Click the "Comment/Object on Project" link in the right sidebar

*Your input can help shape the future for recreation, wildlife and natural resource health on the forest - comment today!*